



■ **AERIAL SUPPORT**

Aerial imaging service for residential and commercial buildings, properties and estates.

- Aerial surveys & inspections
- Insurance assessments
- Property marketing
- Geo mapping

Remotely Piloted Aircraft System
Inspire 1 Pro/Raw

Max Speed
22 m/s

Operating Temperature Range
-10° to 40° C

Dimensions
438x451x301 mm

Camera
Zenmuse X5R
4K RAW video
16 megapixel photos



t: 01322 352330

www.fabricsandmaintenance.com

media@fabricsandmaintenance.com



inspect



identify



broadcast



Unmanned Aerial Vehicles (UAV's)

UAV's or 'Drones' have received their fair share of publicity recently and currently enjoy widespread popularity. Their practical uses include aerial surveys, inspections, search & rescue and land mapping.



Challenges

A typical survey or inspection of a tall building or structure is time consuming and often involves expensive equipment.

Furthermore, many locations can be difficult to reach and too dangerous to be safely walked on.



Solutions

A UAV can be in the air, record in detail the extent of work required and be back in minutes ready for the next assignment

With the latest state-of-the-art UAV units and High-Definition 4K cameras and video, FMC Aerial Support provides complete 360 degrees aerial imaging of the entire property, cost effectively, safely and with minimal disruption.

Live streaming allows clients to direct and view footage on screen so an immediate assessment can be made.

[Call Now](#)[Email Us](#)



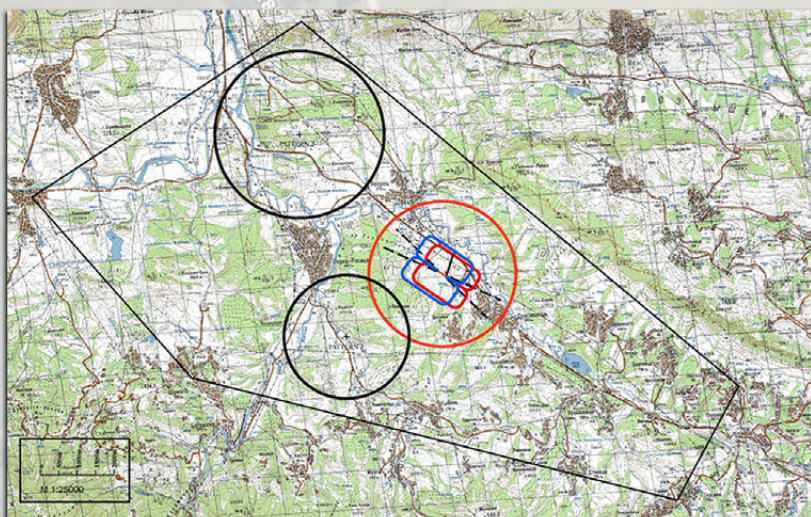
Air Navigation The Order and Regulations

All aircraft, including unmanned aircraft, must be operated in a manner that does not create a hazard to people or property.

FMC Pilots

FMC have a national network of pilots, certified and registered to fly by the Civil Aviation Authority (CAA).

We also hold night flying certification and operate different classes of UAV according to the flight requirements such as weather, in or outdoors and terrain.



Flight Planning

Each flight is pre-planned, airspace and flight paths checked and approved with all necessary risk assessment procedures in place.

Rapid Response

Many of our pilots can be onsite and airborne within hours for situations where an instant inspection is required.

Call Now



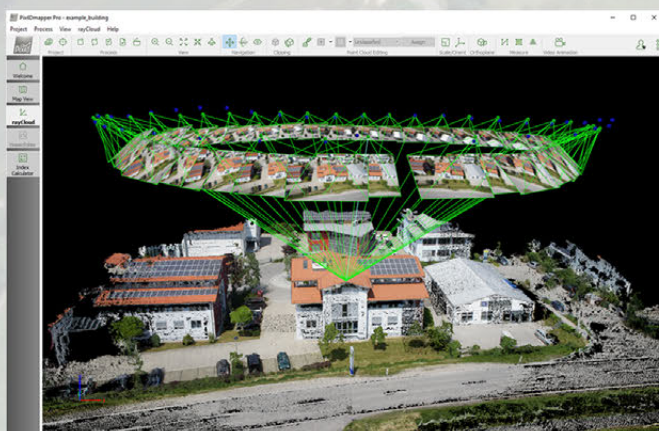
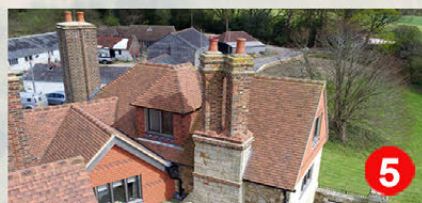
Email Us



GPS Waypoint System

The GPS Waypoint System provides precision flight and imaging accuracy.

This enables the UAV to duplicate it's path from a previous flight in order to broadcast and promote a project before commencement, during works and upon completion.



3D Mapping

Preflight programming follows a fixed grid and records image data creating three-dimensional views of geographical features.



Call Now



Email Us



Dual Control Transmission

4K
video

16
MP

4/3
MFT

3-AXIS
GIMBALL

Independent transmitters for the pilot and camera operator provide additional safety features and extend control of the overall project

INSPIRE 1 PRO

ZENMUSE X5



PILOT

CAMERA

Call Now



Email Us





Land Mapping

UAV's are less expensive and considerably more efficient than helicopters or planes normally used to portray scaled geographical features such as forests, roads or water bodies.

A UAV is able to provide a detailed inspection of the area, define it's boundaries, establish it's characteristics and define it's potential.

Applications

- Filming
- Land Mapping
- Thermo Imaging
- Building Surveys
- Search & Rescue
- Property Marketing
- Estate Management
- Structural Inspections

Sectors

- Media
- Energy
- Leisure
- Security
- Transport
- Insurance
- Corporate
- Environment
- Development
- Communication
- Facilities Management



"FMC's reputation is built on a track record of successfully delivered projects and the relationships we develop with clients and suppliers are key to this success"



Call Now



Email Us

