

■ EMERGENCY SUPPORT

FMC offers 24 hours/365 days a year nationwide response for all urgent maintenance and repairs. We have access to a national network of specialist engineers anytime, anyplace, anywhere!

- Aerial Inspection
- Roofing
- Plumbing
- Heating
- Gas
- Electrical
- Mechanical
- Flooring
- Tiling
- Plastering
- Decorating
- Carpentry
- Glazing



t: 01322 352330

www.fabricsandmaintenance.com

info@fabricsandmaintenance.com



react



assess



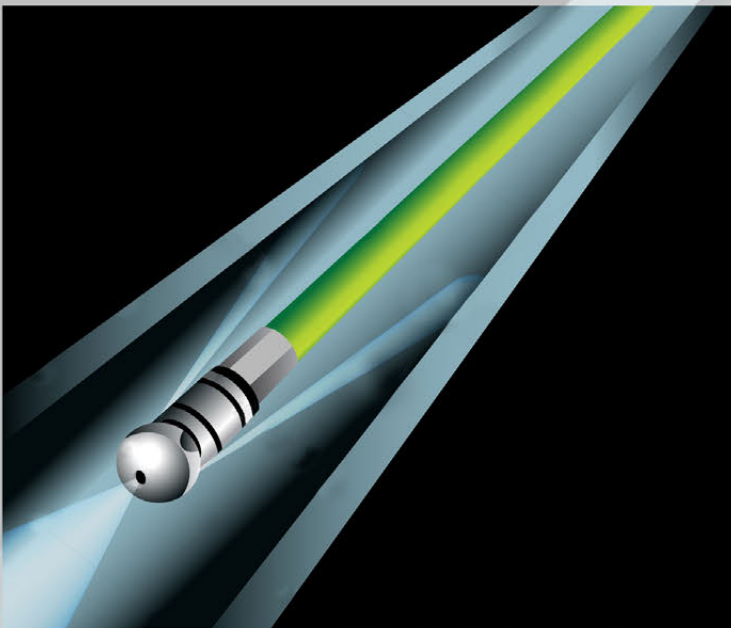
repair



FMC Reactive Support is available 24 hours a day, 7 days a week to attend urgent call-outs for exterior, interior or ground level building emergencies. We will take immediate steps to rectify any issues and provide free independent advice and recommendations to solve any problems.

CCTV Drain Survey

Our specialist drain service uses CCTV camera technology to quickly and safely identify blockages, structural layouts and defects of the drainage system. This not only reduces inconvenience at the job site but is useful in confined spaces and unsafe drain structures.



Emergency Jetting Service

Utilising a combination of high pressure water jetting and industrial vacuuming units, FMC Emergency Jetting Service can be with you in a matter of hours to carry out complete power flushing and drain clearance.

Our Engineers are IPAFFED trained and conform to the Health and Safety Act and The Control of Substances Hazardous to Health Regulations.



Industrial Cleaning

With the aid of High Pressured Water Jetting and vacuum, we have experience in all kinds of industrial cleaning such as graffiti removal, gutter cleaning, tanks, silos, calverts, yards, paving, etc.

[Call Now](#)[Email Us](#)